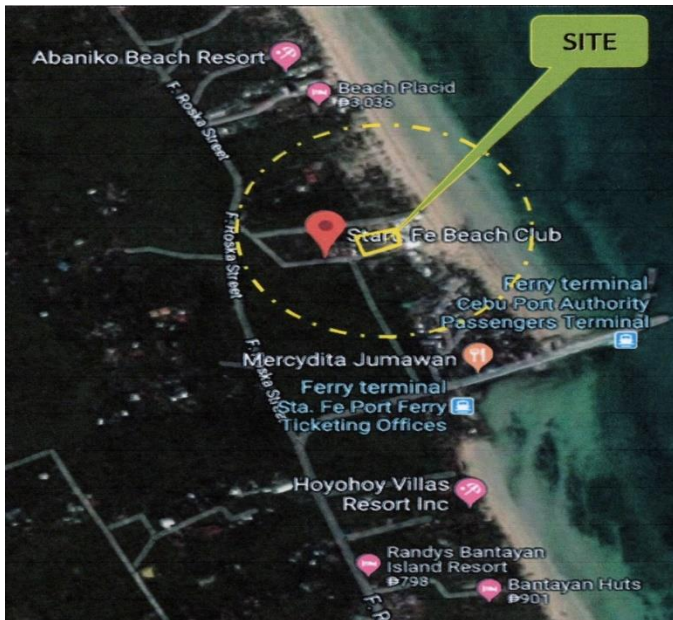




VICINITY MAP



LOT PLAN



LOT AREA:

- 5,297 square meters

DESCRIPTION:

- Consists of one (1) parcel of land with lot no. 364-Part
- **Tax Declaration No. 40-0010-09140**

VICINITY:

- Land development is for commercial use
- Landmarks: Sta. Fe Beach Club, Villa Sin Beach Resort, Beach Placid, Abaniko Beach Resort, Sta. Fe Pier

LOCATION:

- Located on the east end of existing road right-of-way
- About 170 meters east from Ocoy-Talisay Road
- 300 meters from Sta. Fe Pier
- Approximately 1.0 kilometer from Talisay Barangay Hall
- 3.0 Kilometers from Sta. Fe Municipal Hall